

Carlow

camira





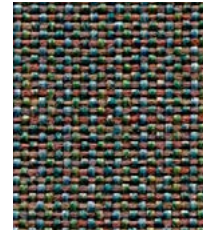
Ardmore
CLW19



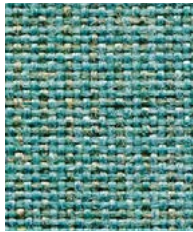
Ardee
CLW10



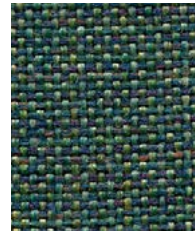
Carrick
CLW18



Baloo
CLW17



Mayo
CLW16



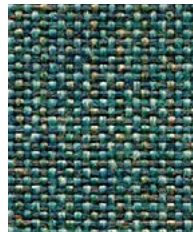
Cavan
CLW15



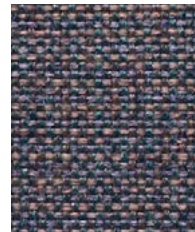
Sligo
CLW13



Ennis
CLW20



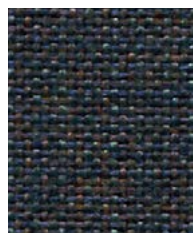
Bree
CLW14



Wicklow
CLW11



Emly
CLW21



Malin
CLW12

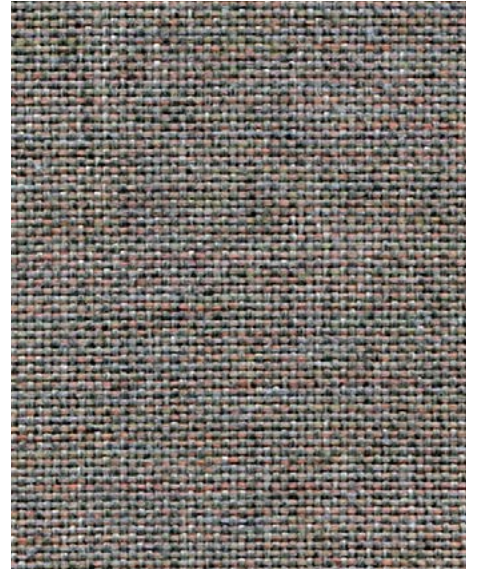
Photographic fabric scans are not colour accurate. Always request actual fabric samples before ordering.



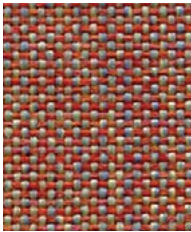
Quin
CLW04



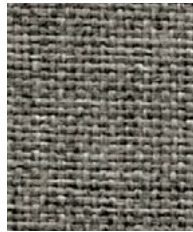
Callan
CLW05



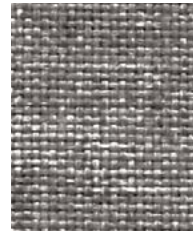
Ballina
CLW02



Navan
CLW06



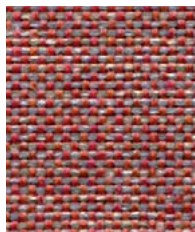
Roundwood
CLW03



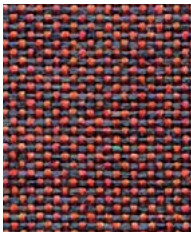
Tallow
CLW01



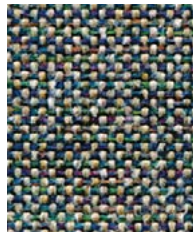
Parteen
CLW23



Dublin
CLW07



Redcross
CLW08



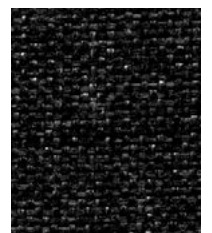
Convoy
CLW09



Glenamoy
CLW24



Clifden
CLW25



Avoca
CLW22



Panels



Acoustic



Year guarantee

Carlow echoes the calm, gentle landscape of its Celtic namesake in rural Ireland. The fabric, like the county, invites you to escape into a place of tranquillity, discovering and exploring its hidden gems scattered throughout a vibrant textile tableau. This dobby weave panel fabric is brought to life in brave and intriguing colour mixes which can be teamed with our most popular upholstery fabrics as well as its panel partner Cara. Carlow is acoustically transparent, making it ideal as a decorative facing for sound absorbing boards.



Technical information

UK

Composition

100% Polypropylene

Width

170 cm minimum

Weight

214 g/m² ±5% (304 g/lin.m ±5%)

Flammability

EN 1021-1 (cigarette)
EN 13501-1 Adhered Class B, s1 ,d0
EN 13501-1 Un-adhered Class C, s1, d0
Note: Flammability performance is dependent on components used. Our certificates show what substrates have been used in our tests. For composite tests customers must ensure their complete furniture meets the necessary standards.

Light Fastness

6 (ISO 105 - B02)

Fastness to Rubbing

Wet: 4, Dry: 4 (ISO 105 - X12)

Acoustic Properties

Acoustically transparent. Acoustic graphs available upon request

Cleaning

Vacuum regularly. Wipe clean with a damp cloth or shampoo using proprietary upholstery shampoo.

Please note that seam performance is dependent on seam construction and needle and thread type. We recommend that appropriate sewing advice be taken.

Batch to batch variations in shade may occur within commercial tolerances. We reserve the right to alter technical specifications without notice. The Unregistered Design Rights and the Copyright in all designs are the exclusive property of Camira Fabrics Limited.

D

Zusammensetzung

100% Polypropylen

Breite

170 cm nutzbare Breite

Gewicht

214 g/m² ±5% (304 g/lfd.m ±5%)

Feuersicherung

EN 1021 - 1 (Zigarettestest)
EN 13501-1 Adhered Class B, s1 ,d0
EN 13501-1 Un-adhered Class C, s1, d0
Bemerkung: Die Schwerentflammbarkeit hängt von den verwendeten Komponenten ab. Unsere Zertifikate zeigen auf, welche Substrate bei den Tests verwendet wurden. Bei Verbundtests muss sichergestellt sein, daß das komplette Möbel den entsprechenden Standards entspricht.

Lichtechtheit

6 (ISO 105 - B02)

Reibechtheit

Nass: 4, Trocken: 4 (ISO 105 - X12)

Akustische Eigenschaften

Akustisch durchlässig. Akustische Messwerte auf Anfrage

Reinigung

Regelmässig staubsaugen. Dazu mit einem feuchten Tuch abwischen, oder mit einem speziellen Polsterschaum behandeln.

Eine optimale Nahtausreissfestigkeit hängt von der Nahtfahne, der verwendeten Nadel und dem Näh-Garn ab. Wir empfehlen daher Nähversuche durchzuführen.

Handelsübliche Farbabweichungen können auftreten und berechtigen nicht zur Reklamation. Wir behalten uns die Änderung technischer Spezifikationen vor. Die registrierten und nicht registrierten Urheberrechte der Dessinierungen sind ausschliessliches Eigentum der Camira Fabrics Limited.

F

Composition

100% Polypropylène

Largeur

170 cm minimum

Poids

214 g/m² ±5% (304 g/m.l ±5%)

Flammabilité

EN 1021 - 1 (cigarette)
EN 13501-1 Adhered Class B, s1 ,d0
EN 13501-1 Un-adhered Class C, s1, d0
Notez: La performance de flammabilité dépend des composantes utilisées. Nos certificats indiquent les substrats utilisés dans nos tests. Pour les tests composites, les clients doivent s'assurer que leurs meubles complets satisfont aux normes nécessaires.

Solidité à la lumière

6 (ISO 105 - B02)

Solidité au Frottement

Mouillé: 4, Sec: 4 (ISO 105 - X12)

Propriétés Acoustiques

Acoustiquement transparent. Graphiques acoustiques disponibles sur demande

Nettoyage

Aspirer régulièrement. Essuyer avec une étoffe humide ou nettoyer à l'aide d'un produit approprié pour tissus d'ameublement.

Veillez noter que la performance du joint dépend de sa construction ainsi que de l'aiguille et du type de fil utilisés.

Une variation de couleurs peut provenir (commerciallement tolérable). Nous réservons le droit de changer les spécifications techniques sans préavis. Les Droits de Conception non-enregistrés et les droits d'auteur de tous les motifs sont la propriété exclusive de Camira Fabrics Limited.

ES

Composición

100% Polipropileno

Ancho

170 cm mínimo

Peso

214 g/m² ±5% (304 g/lin.m ±5%)

Inflamabilidad

EN 1021 - 1 (cigarillo)
EN 13501-1 Adhered Class B, s1 ,d0
EN 13501-1 Un-adhered Class C, s1, d0
Nota: El rendimiento de la inflamabilidad depende de los componentes usados. Nuestros certificados muestran qué substratos se han usado en nuestros tests. Para tests compuestos nuestros clientes deben asegurar si sus muebles cumplen la normativa al uso.

Solidez a la luz

6 (ISO 105 - B02)

Solidez al rozamiento

Húmedo: 4, Seco: 4 (ISO 105 - X12)

Acústico Propiedades

Acústicamente transparente. Gráficos disponibles bajo petición

Limpieza

Limpiar con aspiradora frecuentemente. Bien lavar con un paño húmedo o con un champú apropiado para tapicería.

Tenga en cuenta que el rendimiento de la costura depende de la construcción de la costura, además de la aguja y del tipo de rosca. Le recomendamos que se aconsejen para coser la costura.

Las variaciones de lote a lote en la sombra se puede producir dentro de tolerancias comerciales. Nos reservamos el derecho a efectuar modificaciones técnicas sin previo aviso. Los derechos sobre los diseños no registrados y los derechos de autor en todos los diseños son propiedad exclusiva de Camira Fabrics Limited.